



CLEARVIEW KIT INSTALLATION GUIDE

Kit contents

1. Recorder with power supply
2. Camera Cables
3. Cameras and power supply
4. Mouse

**** Display monitor and HDMI cable not included **UPS systems are recommended**

Before you run your Camera wires, be aware the ends of your cables are different. One is meant for the camera end and the other for the recorder end. Be sure not to run your wires backwards.



Everything is in the box



Locate the recorder power supply and plug it in to the rear of the recorder.



Plug the power wire in to the wall outlet.



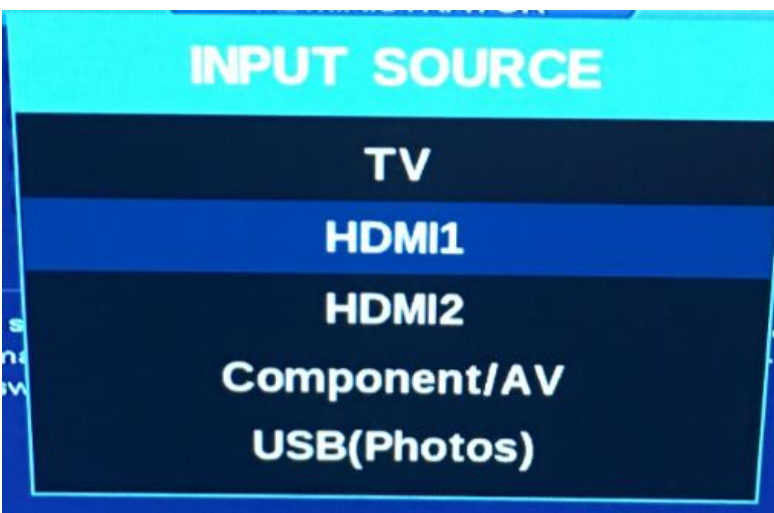
Plug your display monitor (not included) in to the wall outlet



Plug your HDMI cable (not included) in to the recorder and your display monitor.



Connect the network cable to the recorder. Connect the other end of the network cable to your Router.



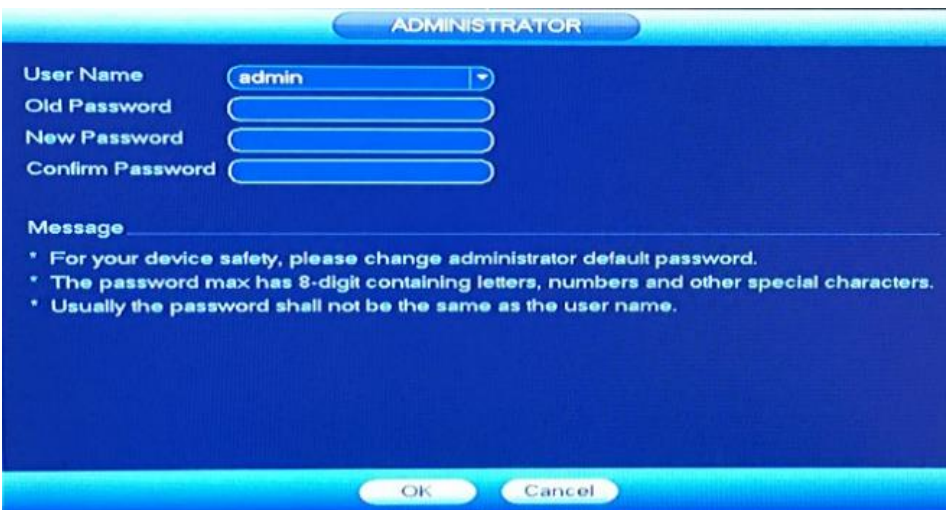
Double check to make sure your monitor is set to the correct input



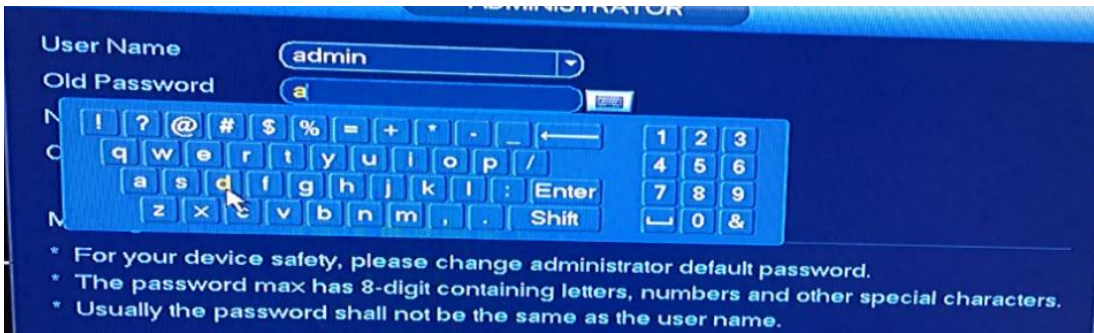
Remove the mouse from the kit. The two buttons on the mouse do the following. Left click chooses the option you are on whereas the right mouse button goes backwards 1 screen. So if you are ever on the wrong screen, right click the mouse to go back.



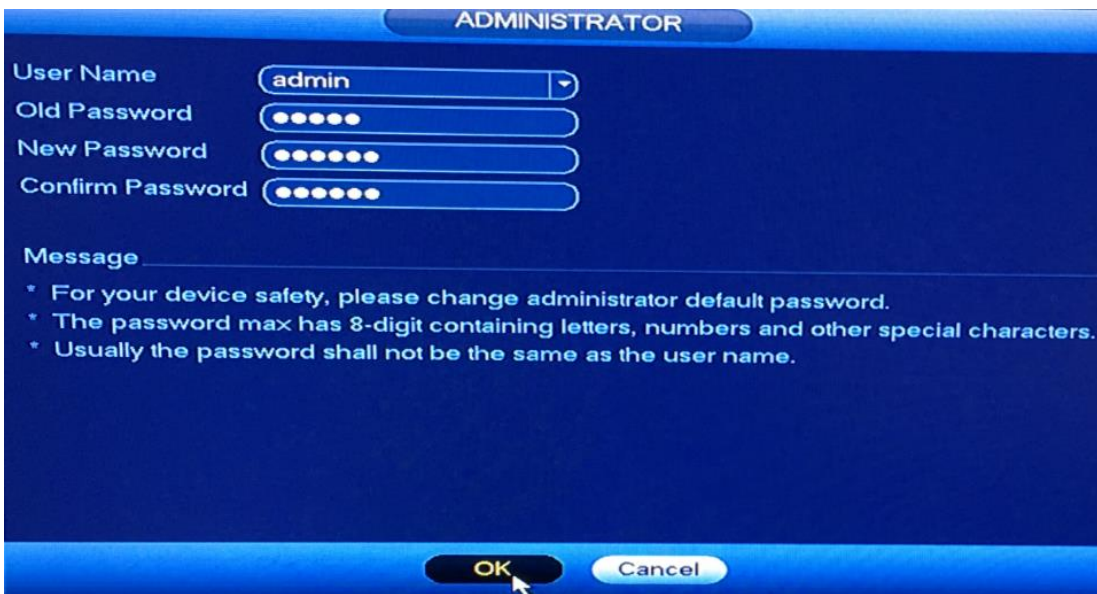
Plug the mouse in to any USB port on the back of the recorder.



The system will immediately prompt you to change your password from the default setting. To do this just click the mouse on the area you want to type the password in and a digital keyboard will pop up on screen.



By default, your admin username and password will both be “admin”. When you enter the new password make sure you write it down somewhere. Also be aware the password is case sensitive. If the new Password is “ADMin” make sure you note where you used capital letters.



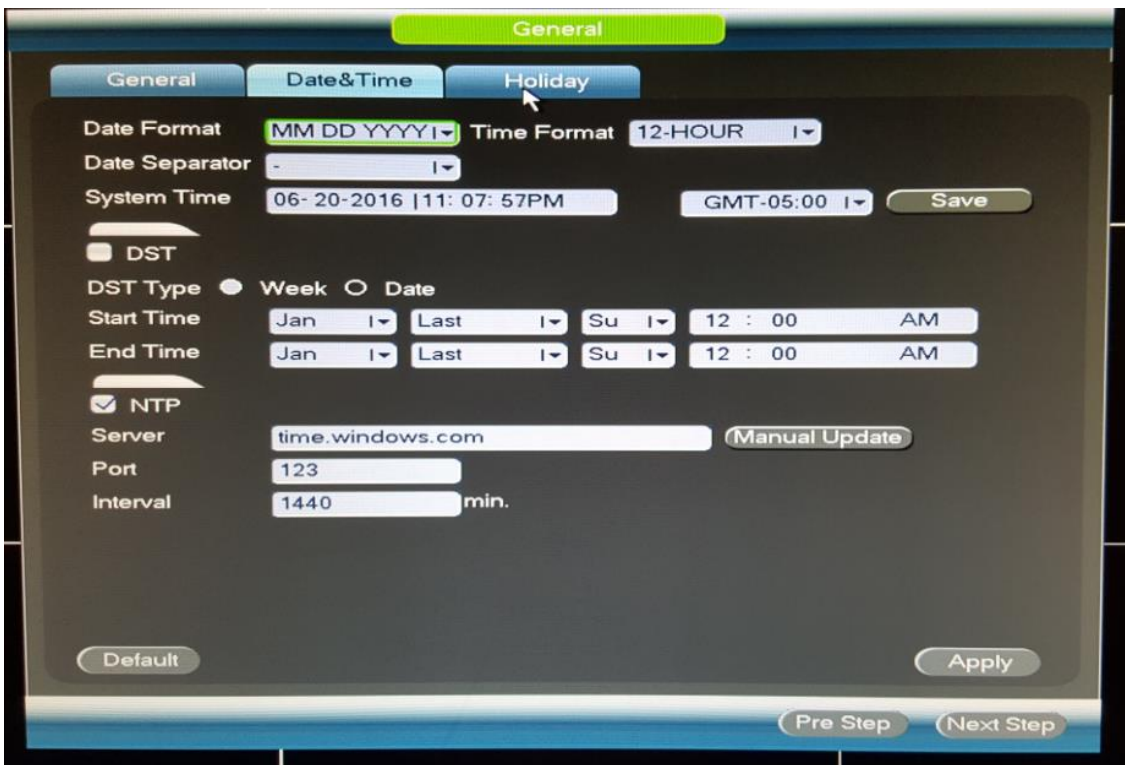
Once you have entered the new password, click “OK” at the bottom of the screen.



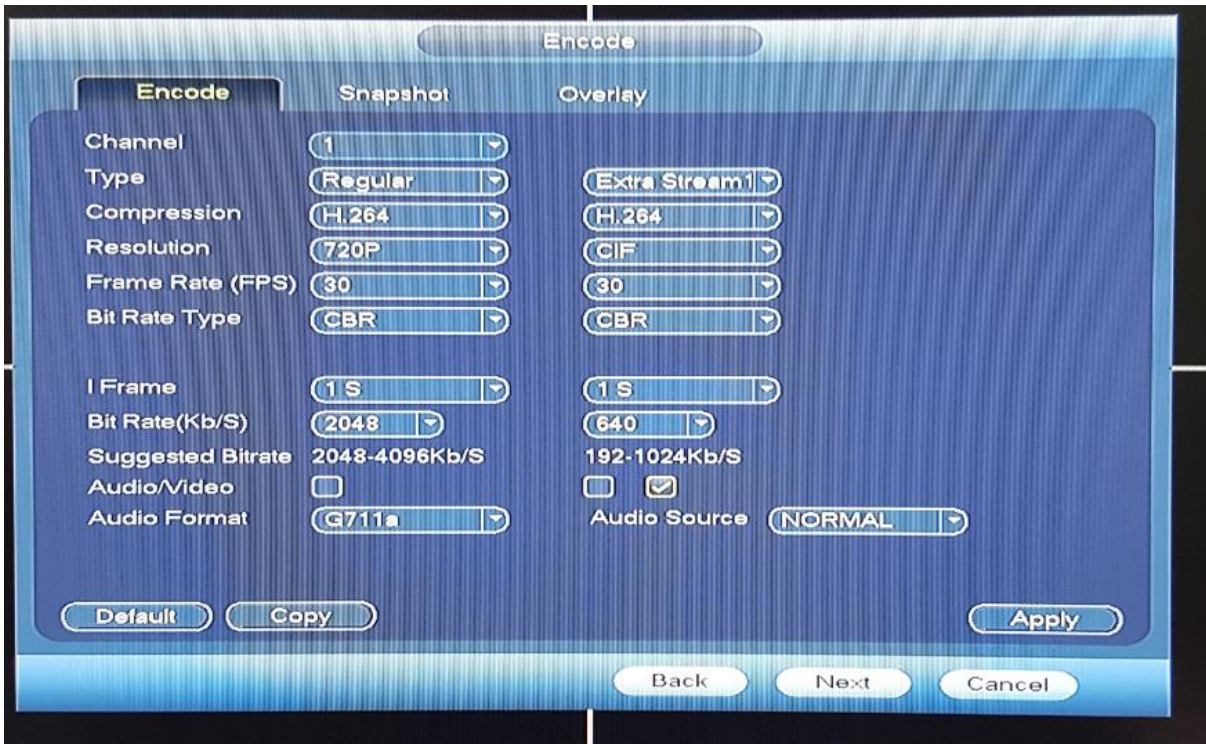
Next you will be prompted to by the startup wizard. Click “next step” as shown above



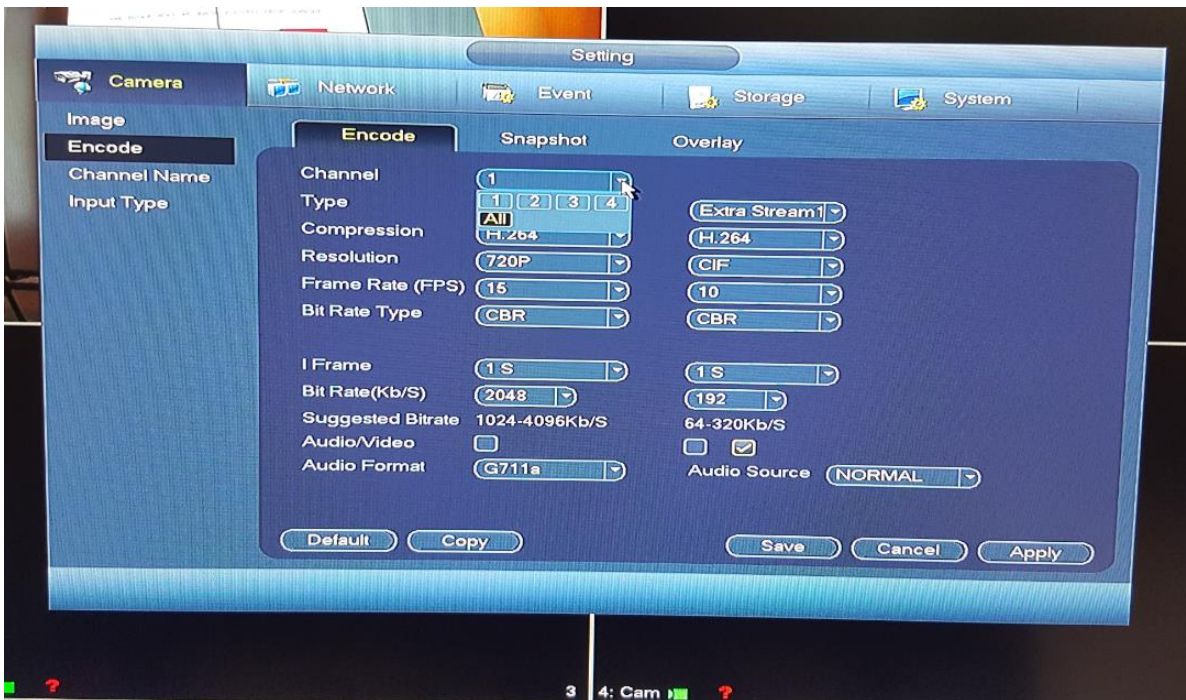
The general Tab in most cases will be left at the default settings. Click on date and time at the top, without making any changes to this screen.



On the date and time screen, set your date and time along with your time zone. Click Apply then next step.

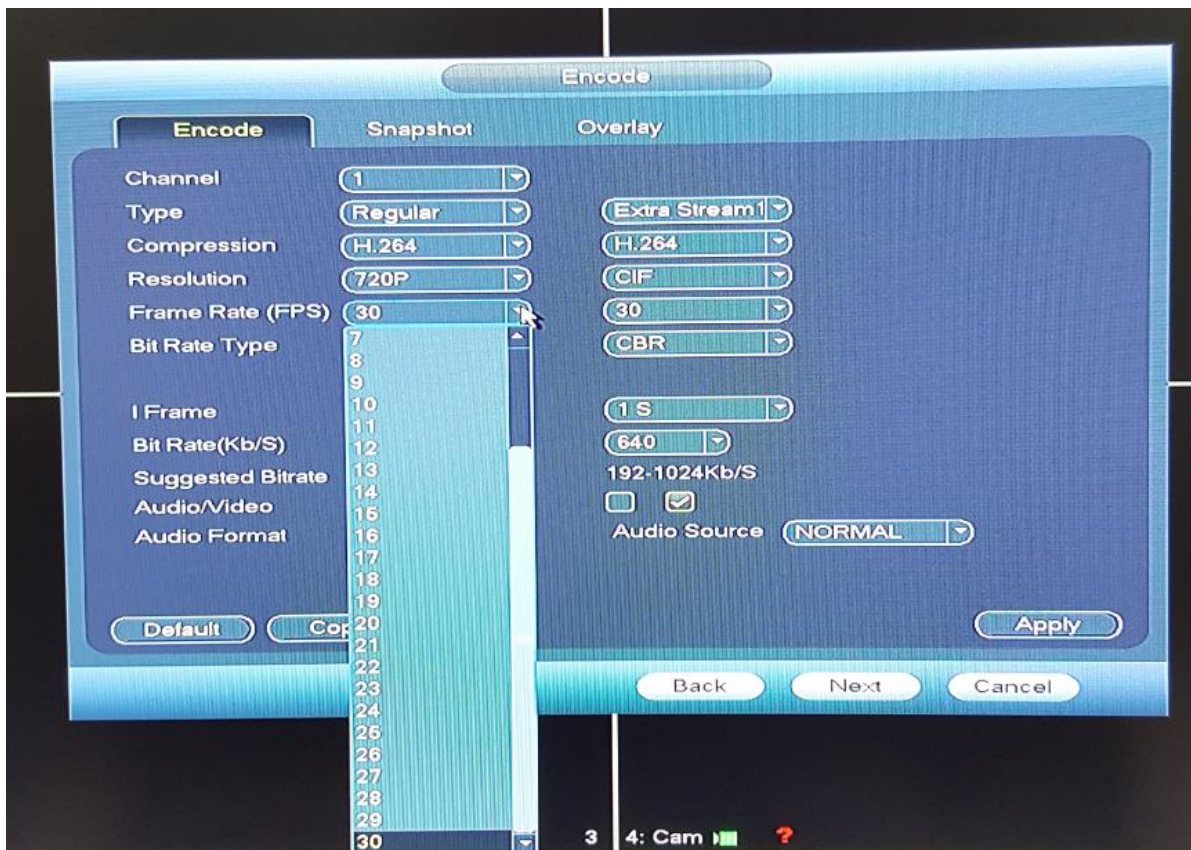


Encode settings determine video Quality and the smoothness of the video.



First click on the down arrow next to the word channel near the top of the screen. A pop up will appear,

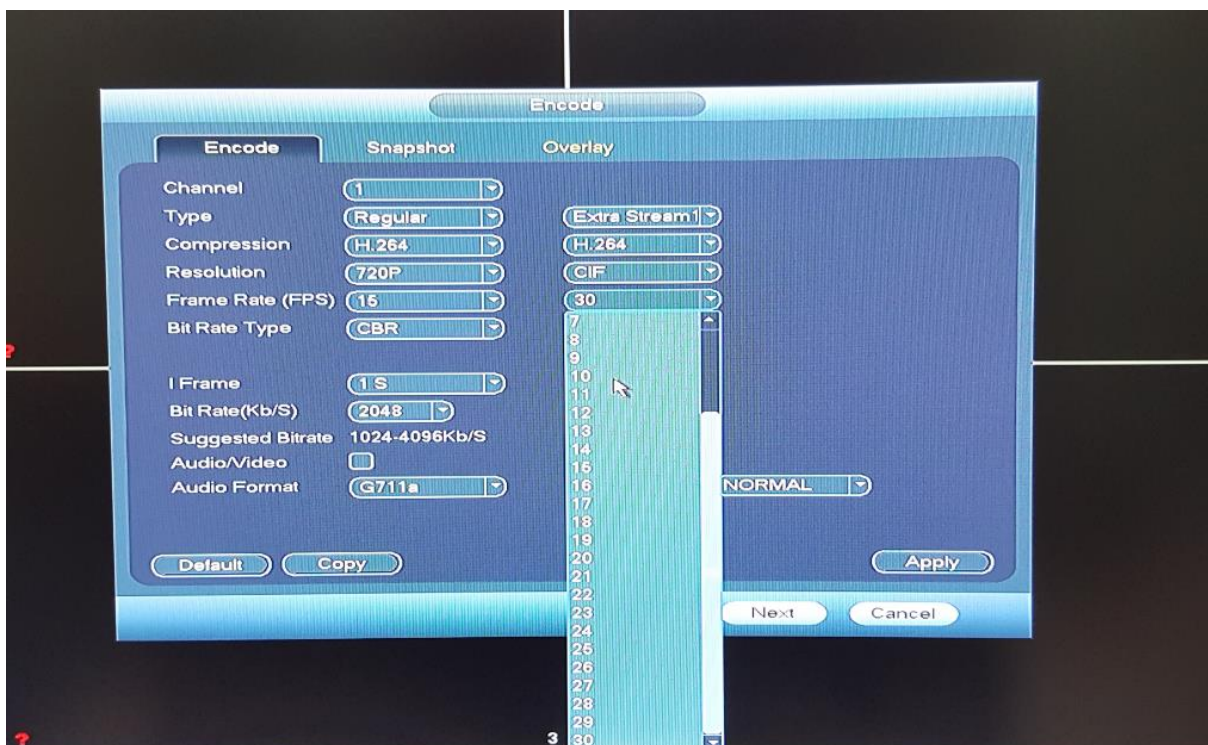
Click on the box that says "all". You are doing this because in most installations, you want all cameras to be treated the same in regards to image quality and frame rate.



The human eye can only see about 17 FPS. A standard movie is recorded at 24 FPS and a blue ray movie is recorded at 27 FPS. Your Machine can record up to 30FPS. However, the more frames it uses, the more hard drive space is consumes.

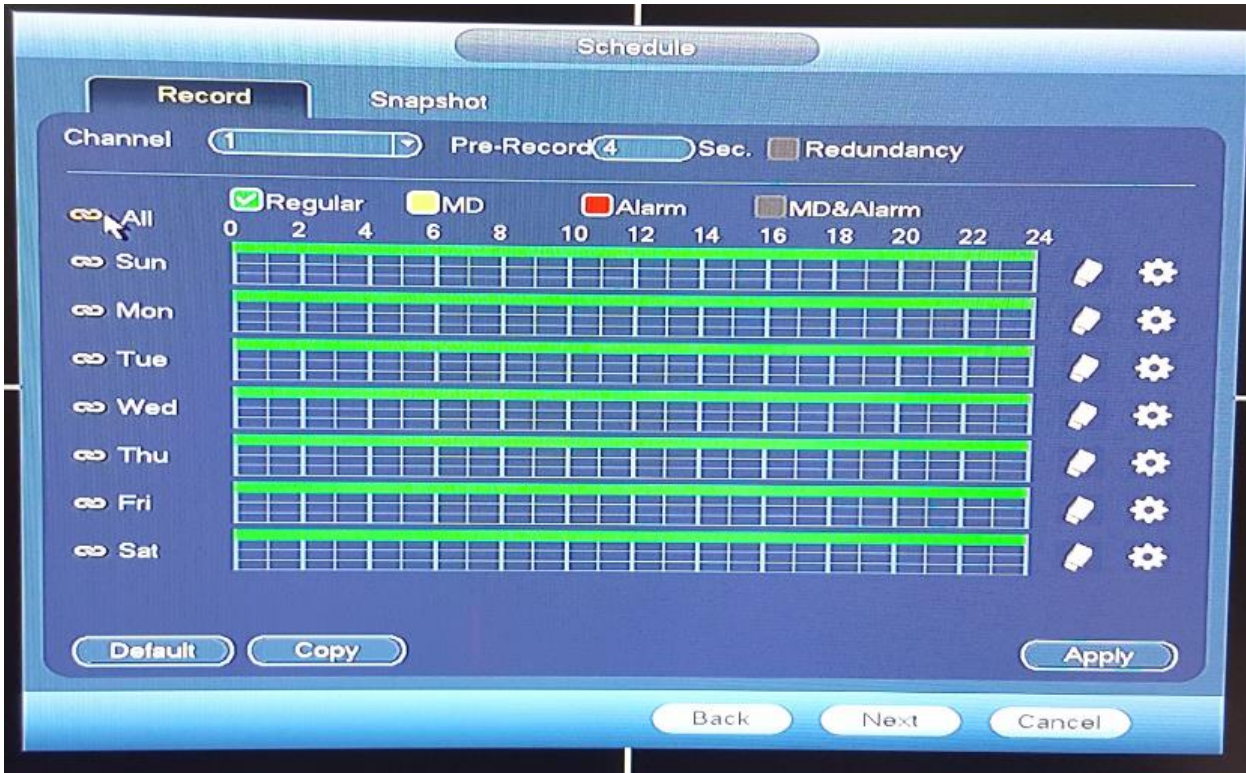
For example, if you set the machine to 30 FPS and the hard drive holds 1 week of footage, if you set it to 15 FPS the same hard drive will hold 2 weeks of footage.

Most installers set the recorders to 15 FPS. From the drop down as shown above, choose the frame rate you wish.



To the right you will see “extra stream” as shown above. This is the video that gets sent to mobile devices. This video needs to be of lesser quality due to the limitations of cell phones and services. Most installers set the frame rate on the extra stream to 10 FPS. This allows the user to see what they want but not slow down or lock up their phone because of heavy data use. If you feel that when you view on a cell phone that the image is not clear enough. Increase the extra stream resolution, not frame rate. Just above the frame rate you will see it says “CIF” resolution. You can click on that drop down arrow and increase the resolution to D1 and the video will look much better

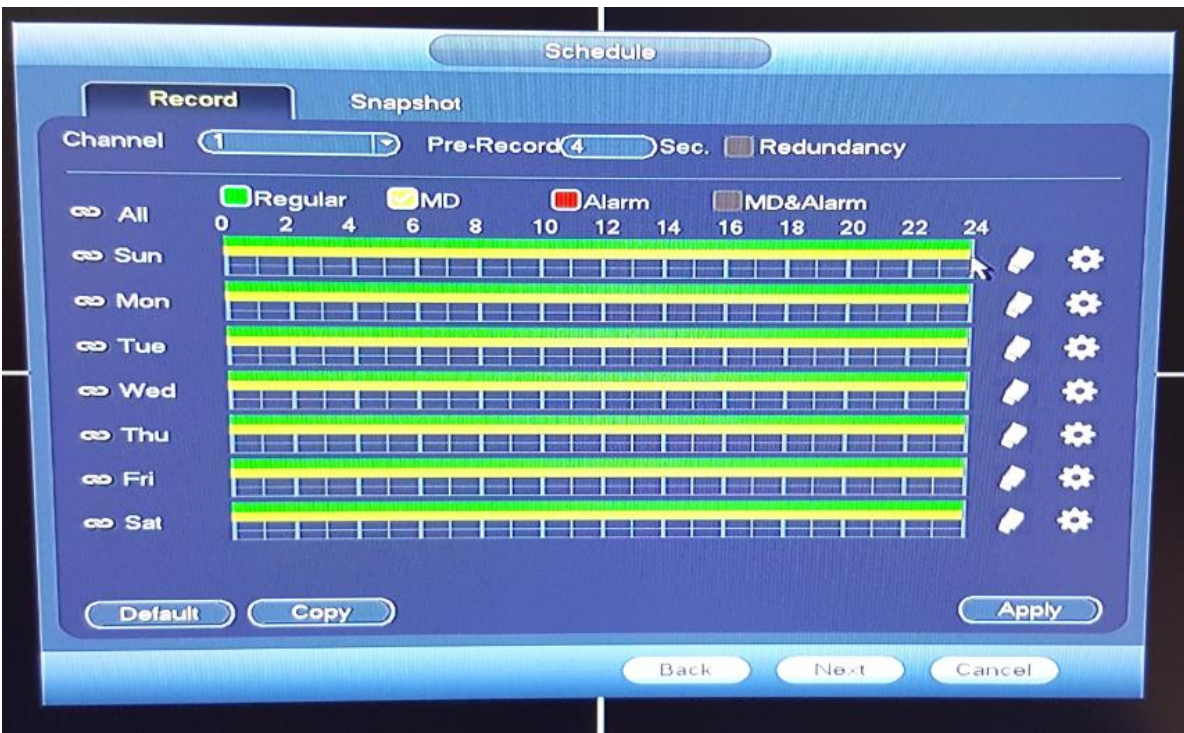
Click next at the bottom of the screen once all changes have been made.



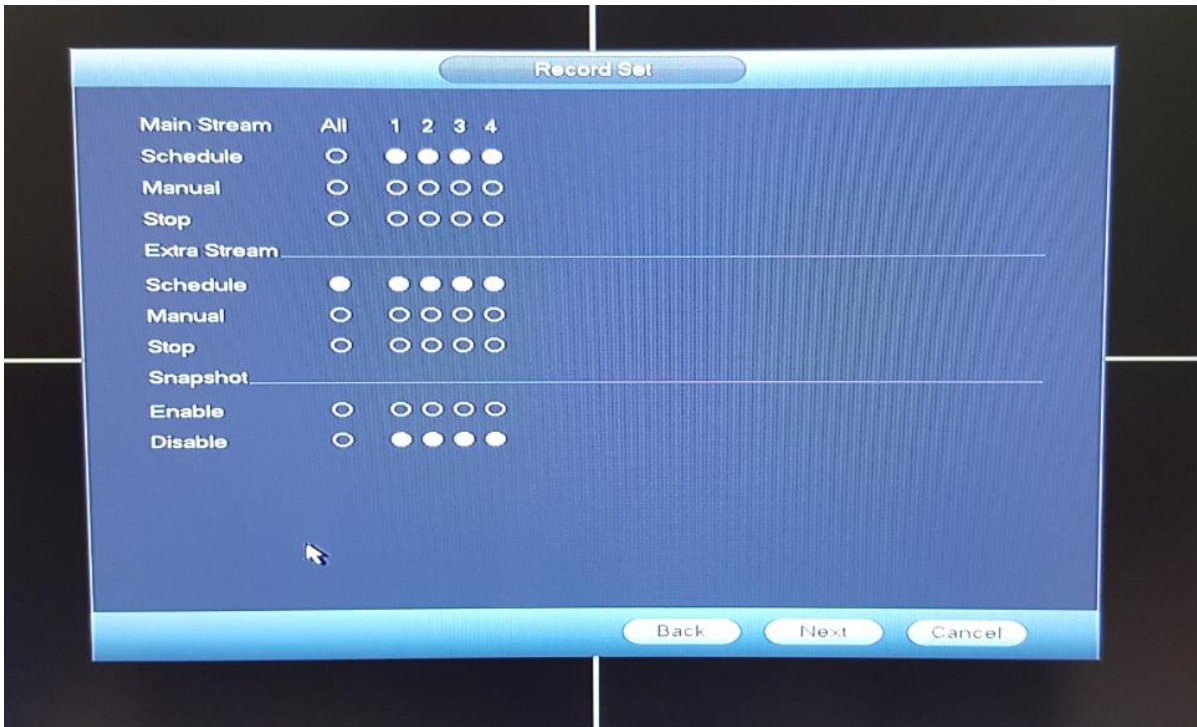
Your next screen tells the recorder how you want your recordings controlled. As you can see the color green stands for “regular” recording. That means it will record constantly. Above on the schedule, it shows all cameras with a green line 24 hours a day 7 days a week. So by default your system is already recording. Go ahead and click on the icon next to the word “all” near the top left corner as shown above.



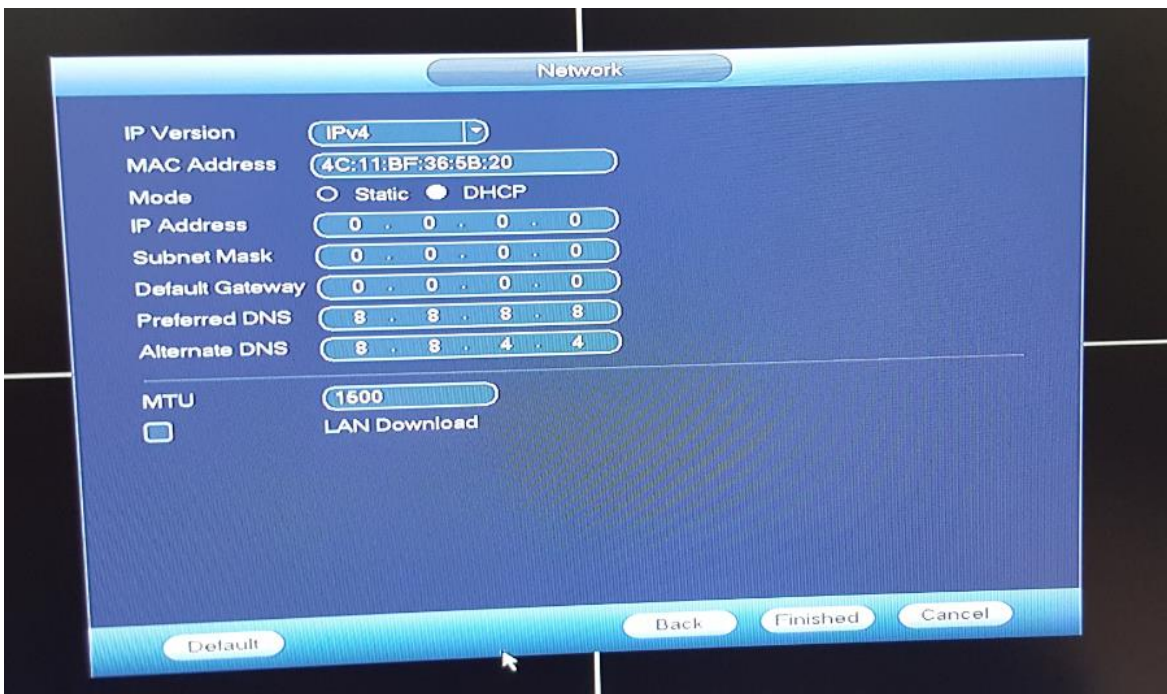
Yellow or “MD” stands for motion detect. Many installers prefer to record constantly but they would also like the system to mark the motion events so they are easier to find. Use your mouse to drag the yellow line across the 24-hour period. As shown. Since you have clicked the “all” icon, it will mirror what you do on all the other days below it.



Once you add motion detect as described above, your screen will look like this. Click “apply” then click “next”.



Your next screen should be set to look like the above image. Once you have made those changes click next at the bottom of the screen.



The next screen will be your network set up. In most cases you will just need to check the DHCP box you see on the right side of the above image. Then click finished. Most networks will assign an address to anything that's connected to it. By checking DHCP this allows your network to assign the network credentials rather than you doing it.

Should this not work or if you know in advance that a network admin controls the network, then ask them for the following information and put it in the appropriate place above.

IP address, Subnet mask, Default gateway, Then click finished.

Your system may reboot at this point.

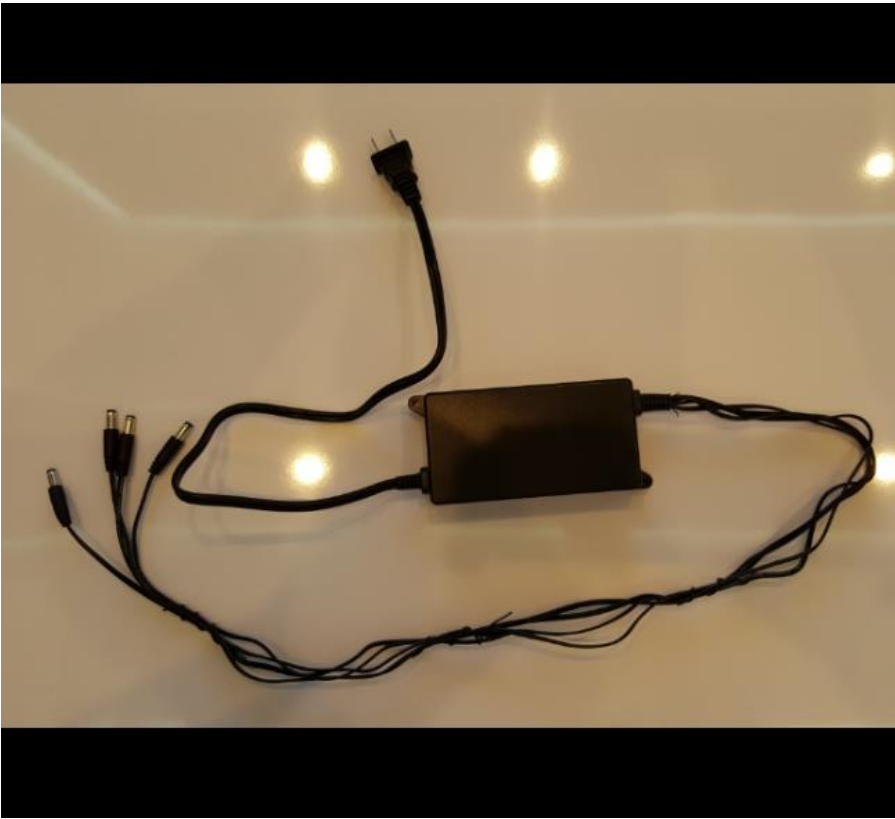
Installing cameras.



Before you run your wires, be aware the ends of your cables are different. One is meant for the camera end and the other for the recorder end. In the above image you will see the red power connectors are different. Be sure not to run your wires backwards.



Run your wires from the recorder to the proper locations then mount your cameras.



The above image is of the camera power supply. Don't plug this in to the wall yet.



Connect your power supply to the end of the camera wire.



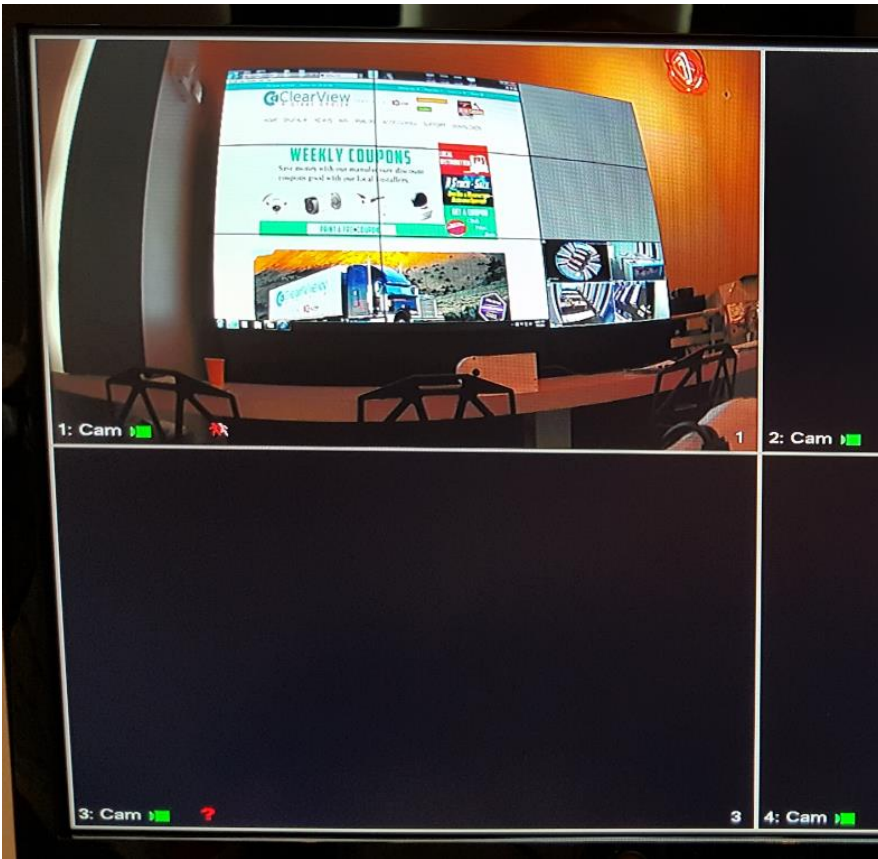
Connect the yellow connection to the back of the recorder.



Connect the camera to the other end of your wire.



Now plug the camera power supply in the wall outlet.



You will see that you have an image on your monitor now of all the cameras you connected.

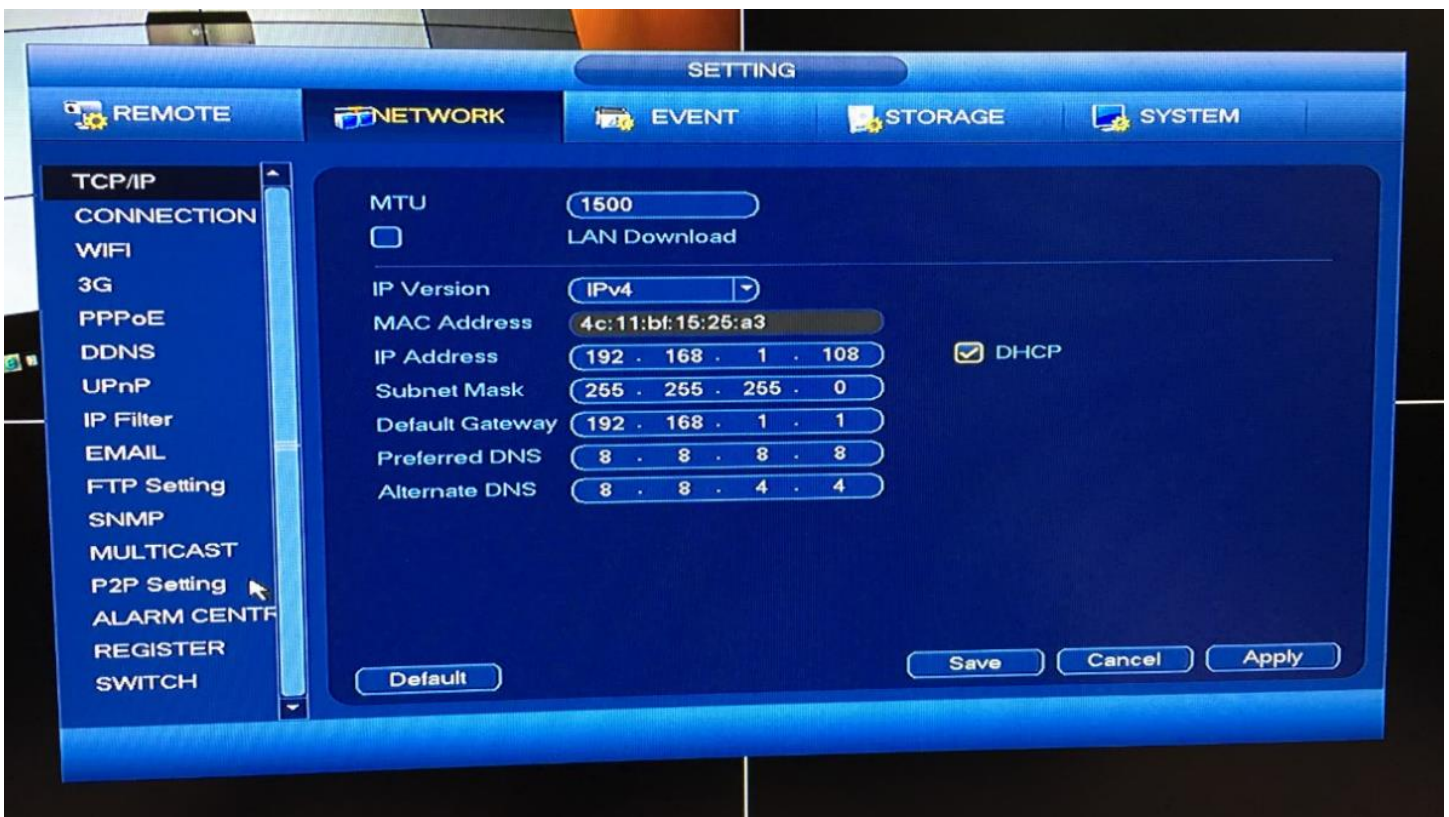
Remote Viewing Setup



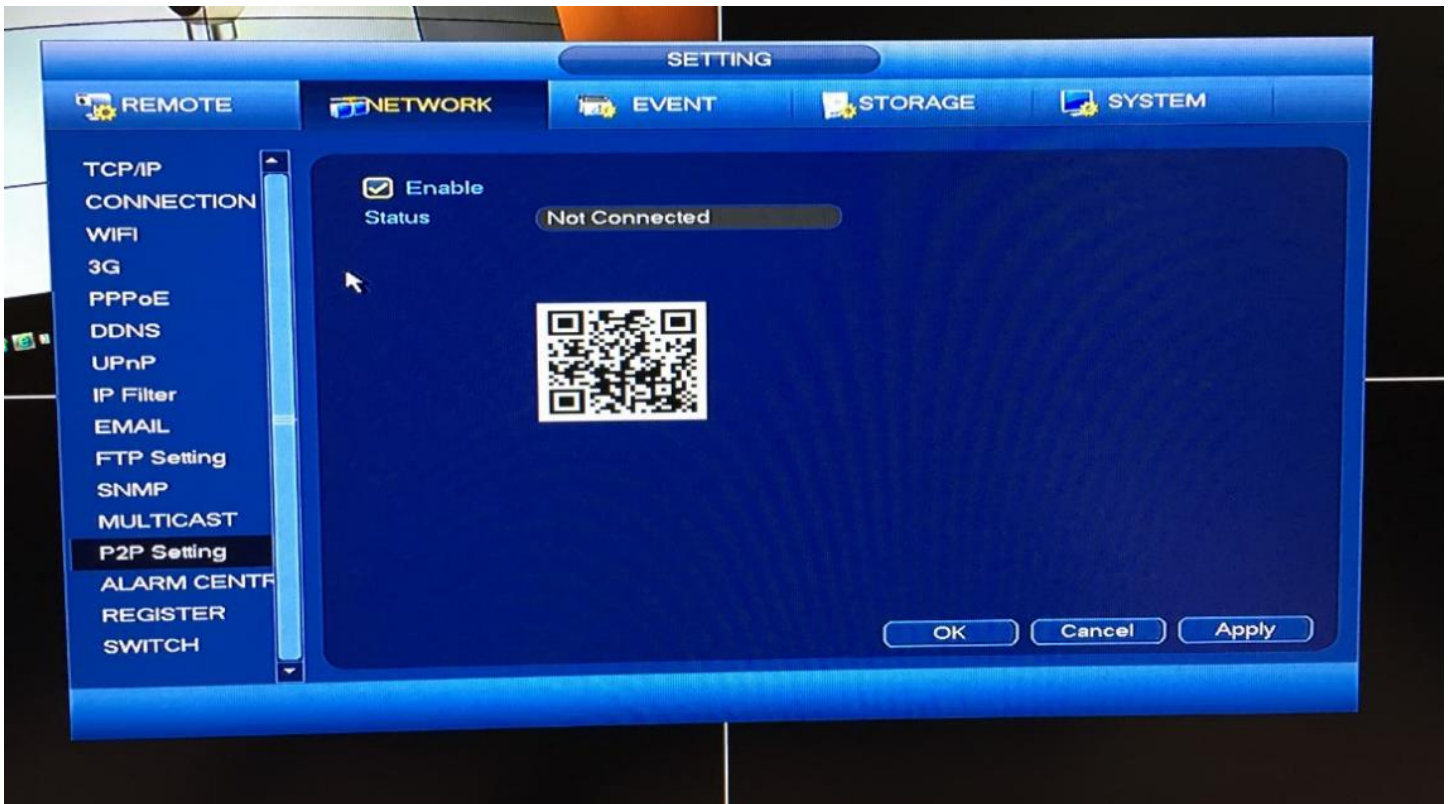
Right click the mouse anywhere on the screen and you will see this menu pop up. Once you see this, click “Main Menu”



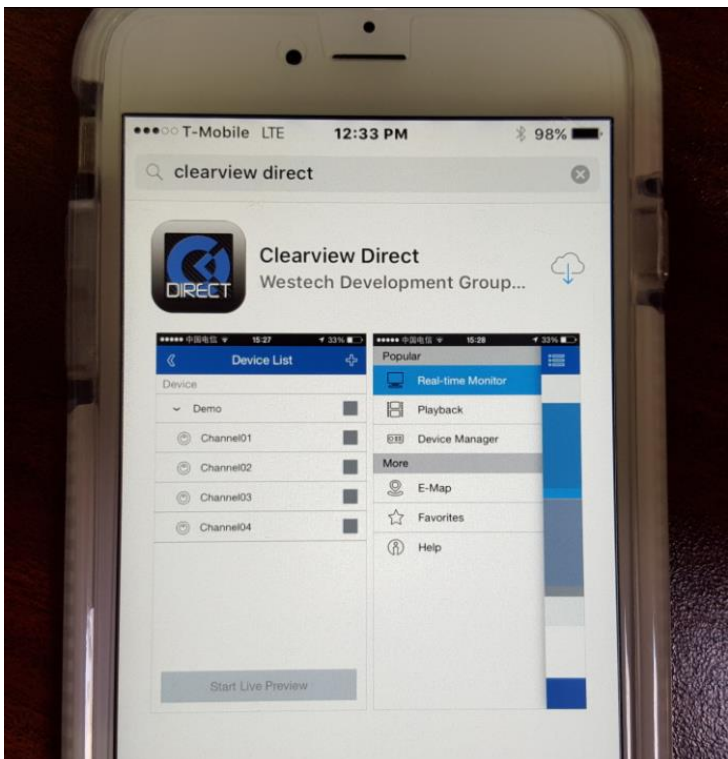
One the Main Menu screen you will notice 3 sections. Operate, Info and Setting. Click on the “network” button under setting, not under info.



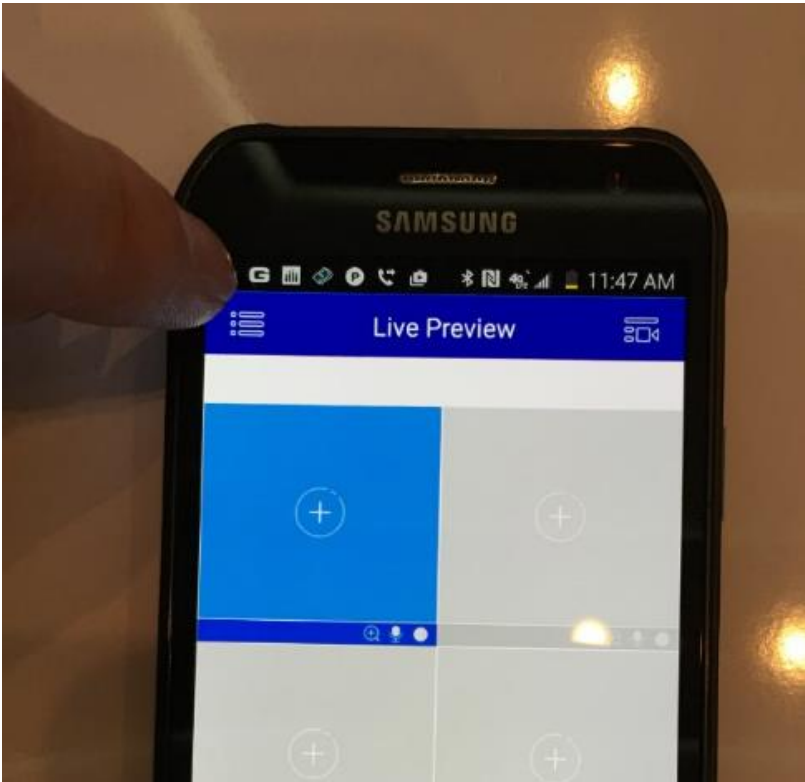
Once on the network screen look to the left side, you will see an option called “P2P setting” click that.



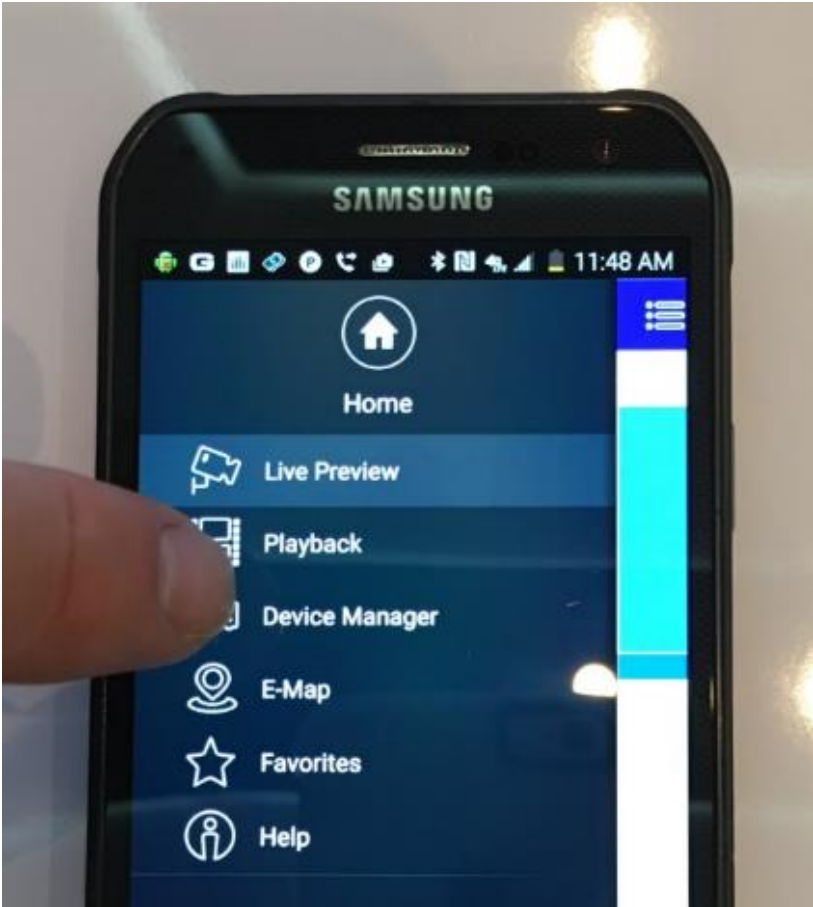
Make sure the option for P2P is enabled as it is here. Now get your Cell Phone and we will come back to this in a moment.



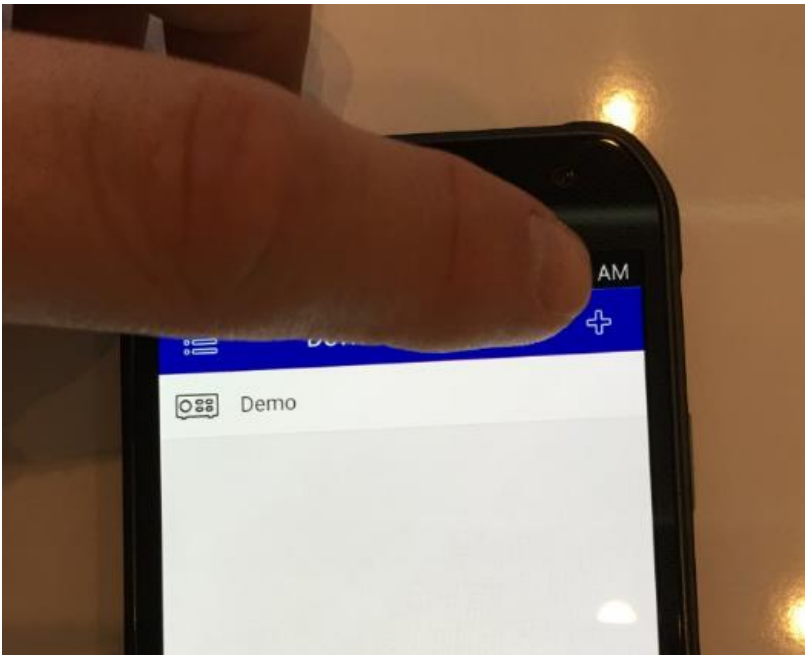
Go to the app store on your mobile device and search for ClearView Direct and download that free app.



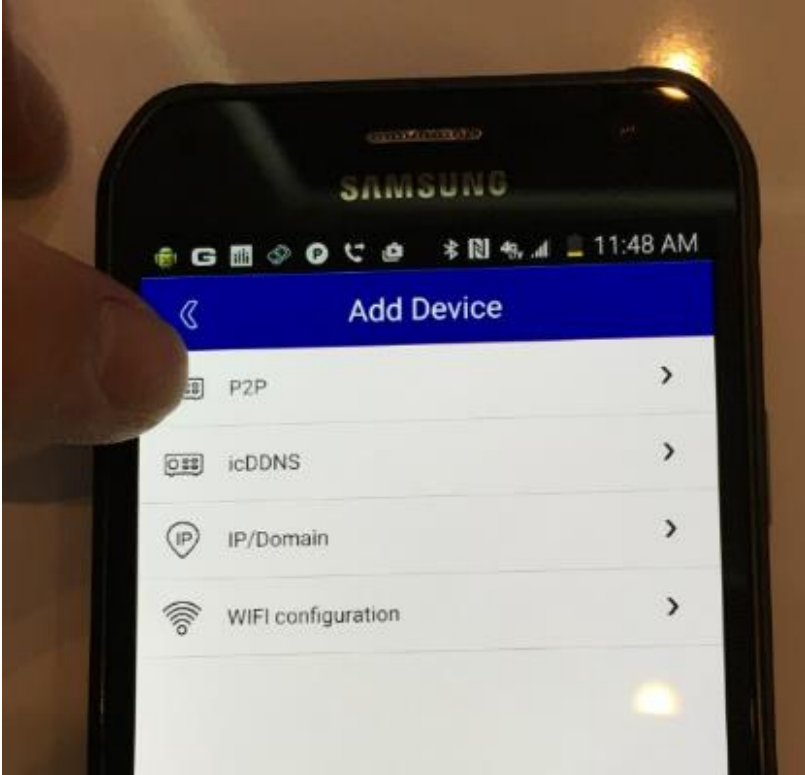
Touch the menu on the top left corner



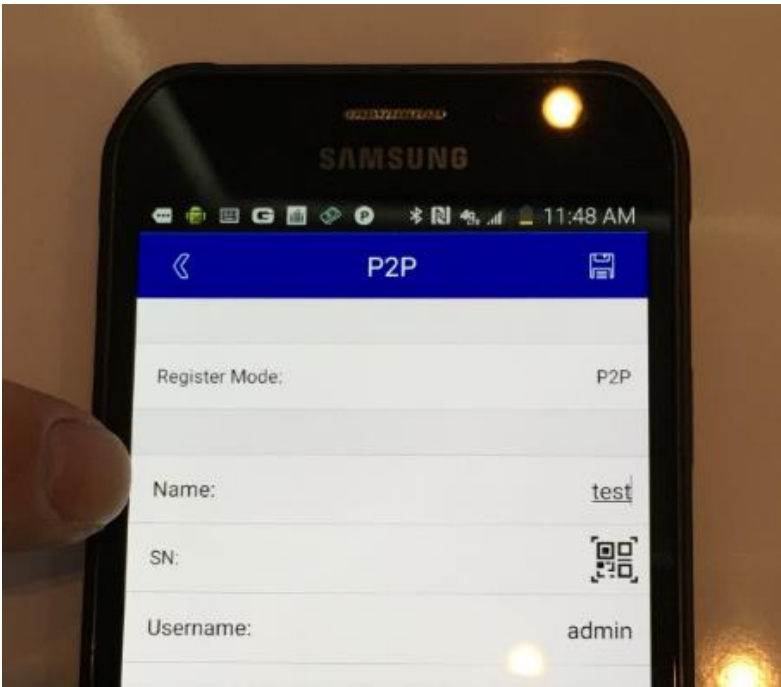
Click device manager



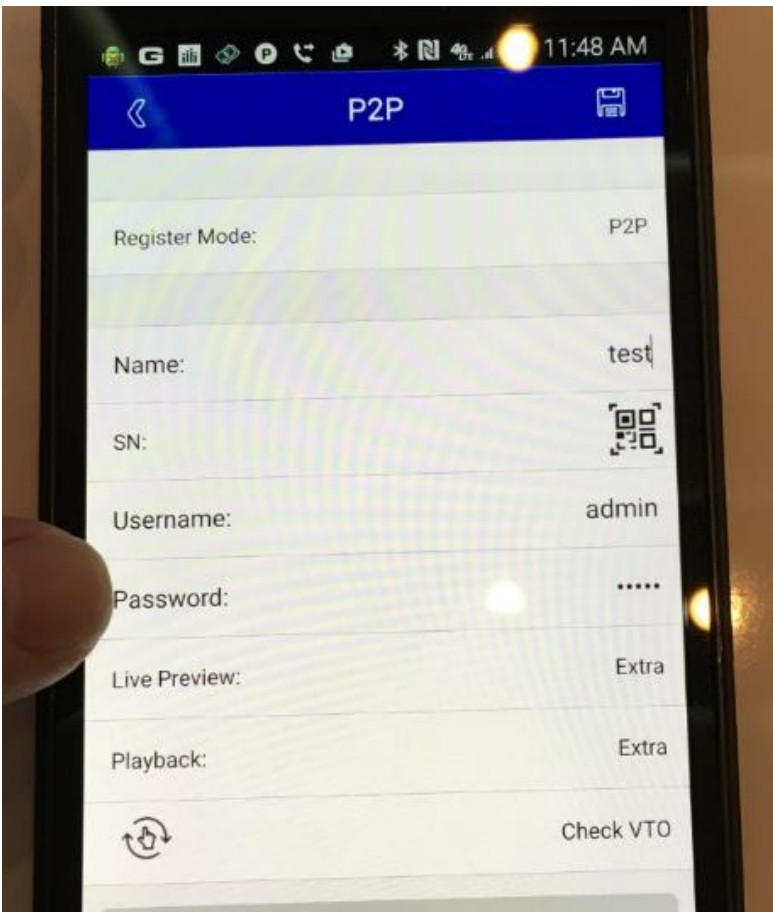
Touch the top left corner to add a device.



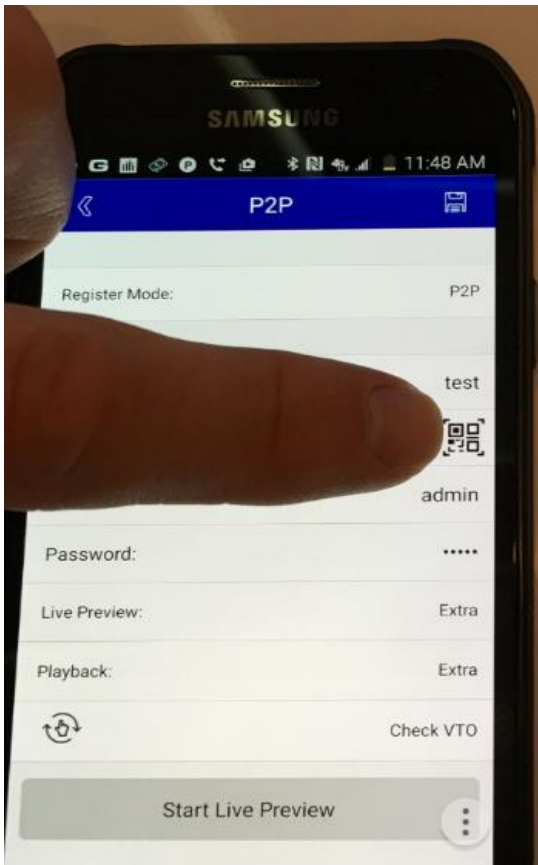
Touch P2P



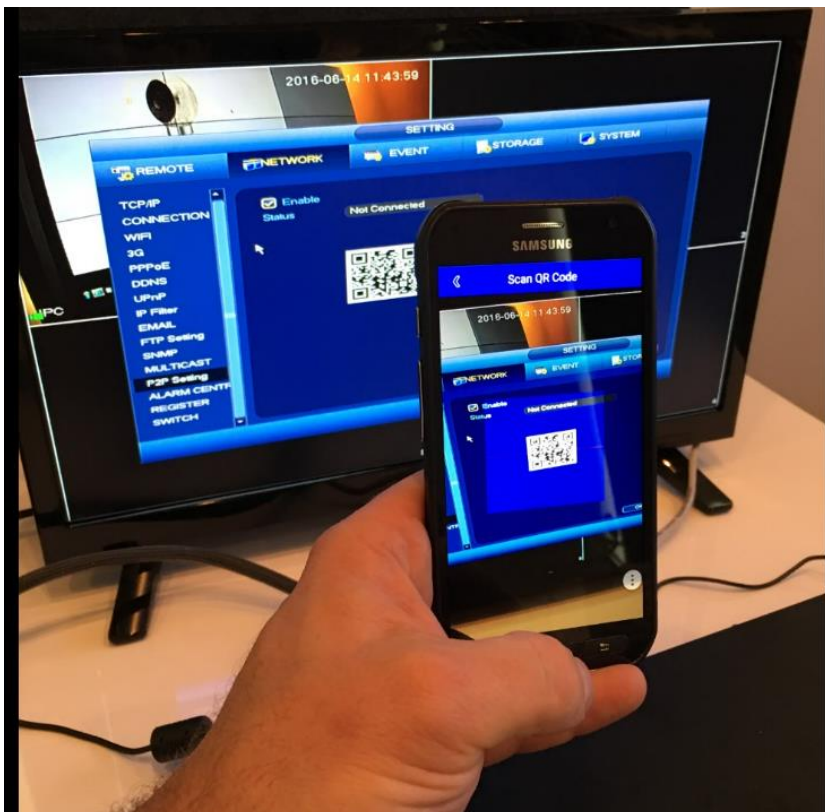
Name the device anything you want.



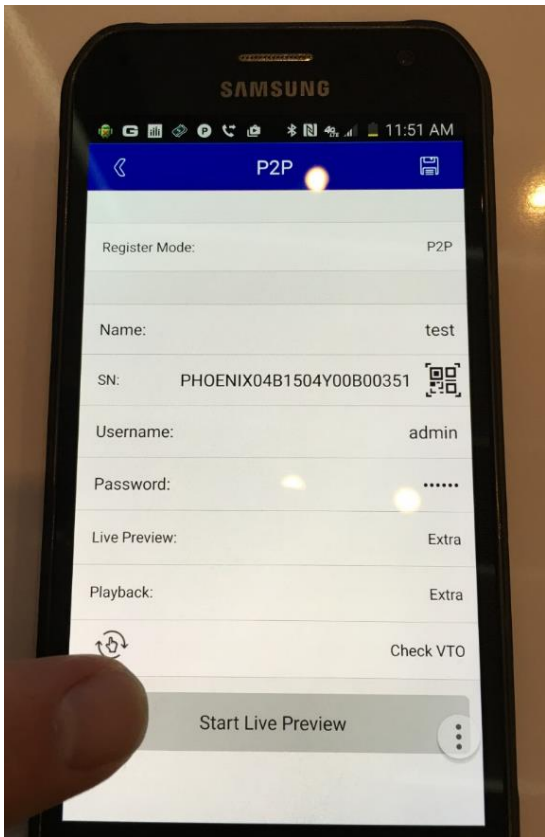
Now enter the new password you made earlier when you set up the recorder.



Next to SN: touch the Icon for QR code.



Now you can scan the QR code you see on your display monitor with your phone.



Click "start live preview to see your system live. Done!